

Figure 1 : Inequality and political support for redistribution
 ($B = 5\%, 0, -5\%$)

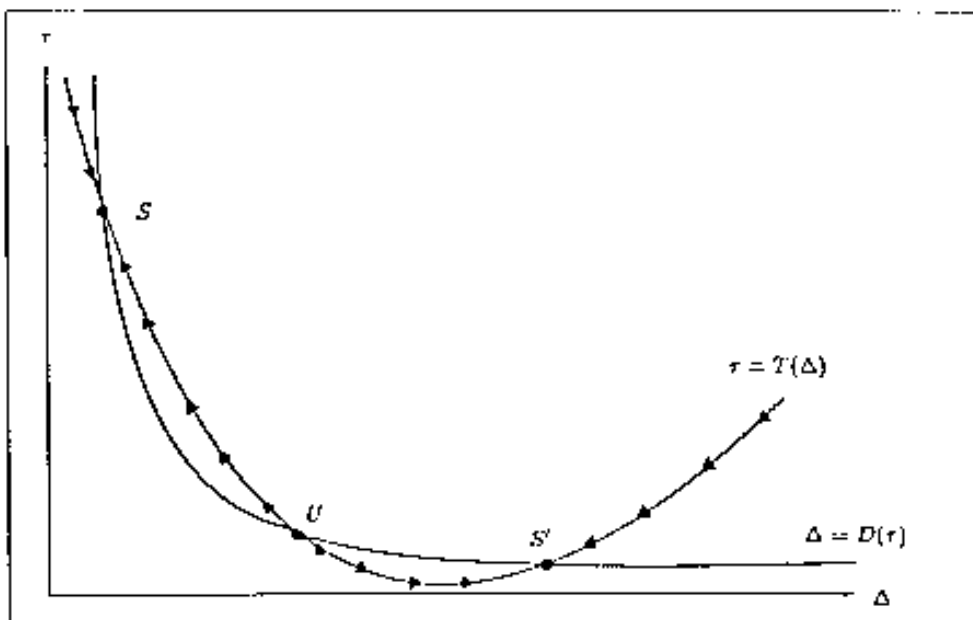


Figure 2 : Dynamics and Steady-States

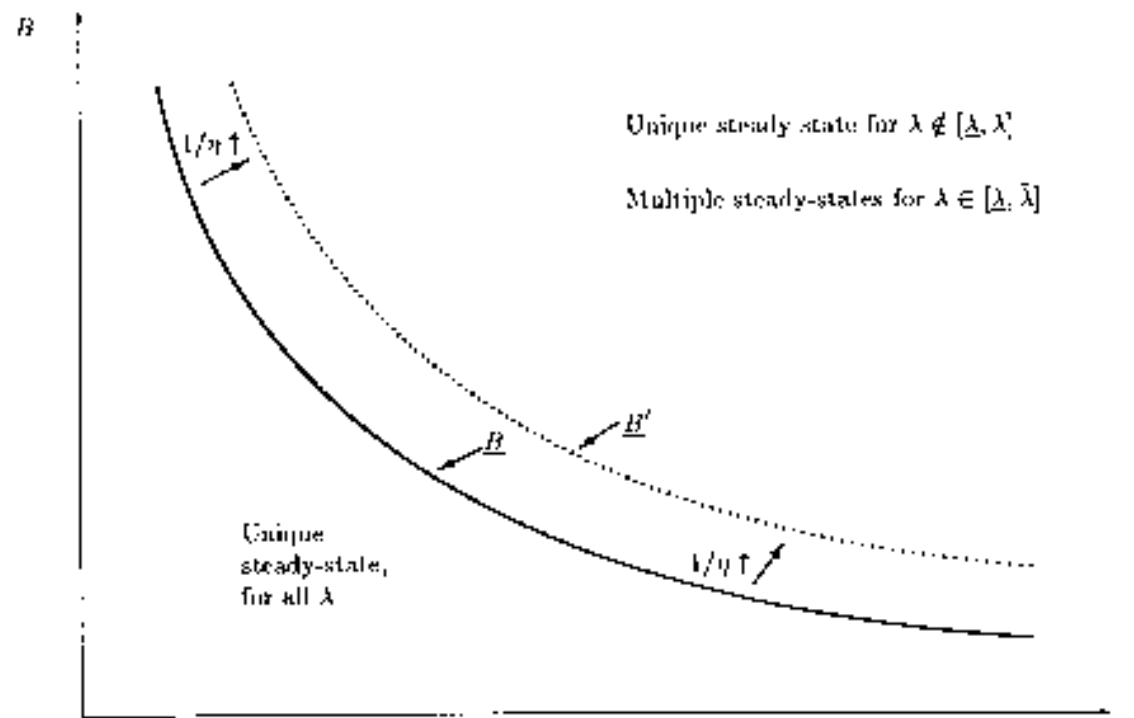


Figure 4: Multiplicity or Uniqueness of Stable Steady-States
 (the dotted line corresponds to $v/w > 1/\eta$)

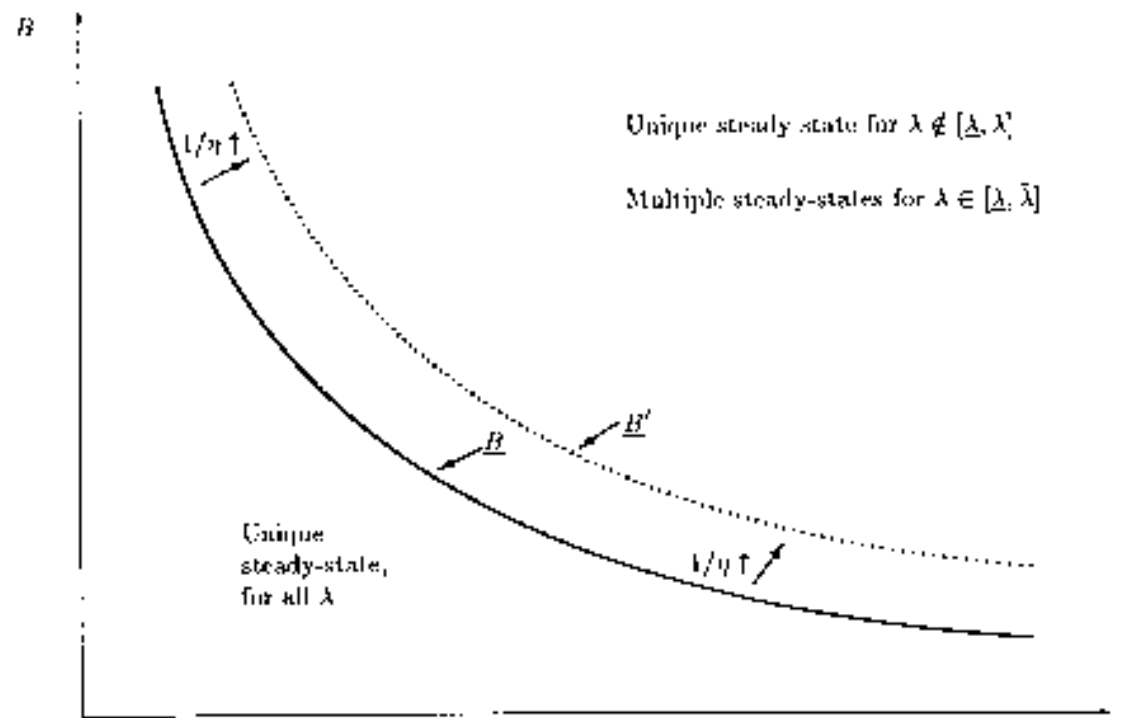


Figure 4: Multiplicity or Uniqueness of Stable Steady-States
 (the dotted line corresponds to $v/w > 1/\eta$)

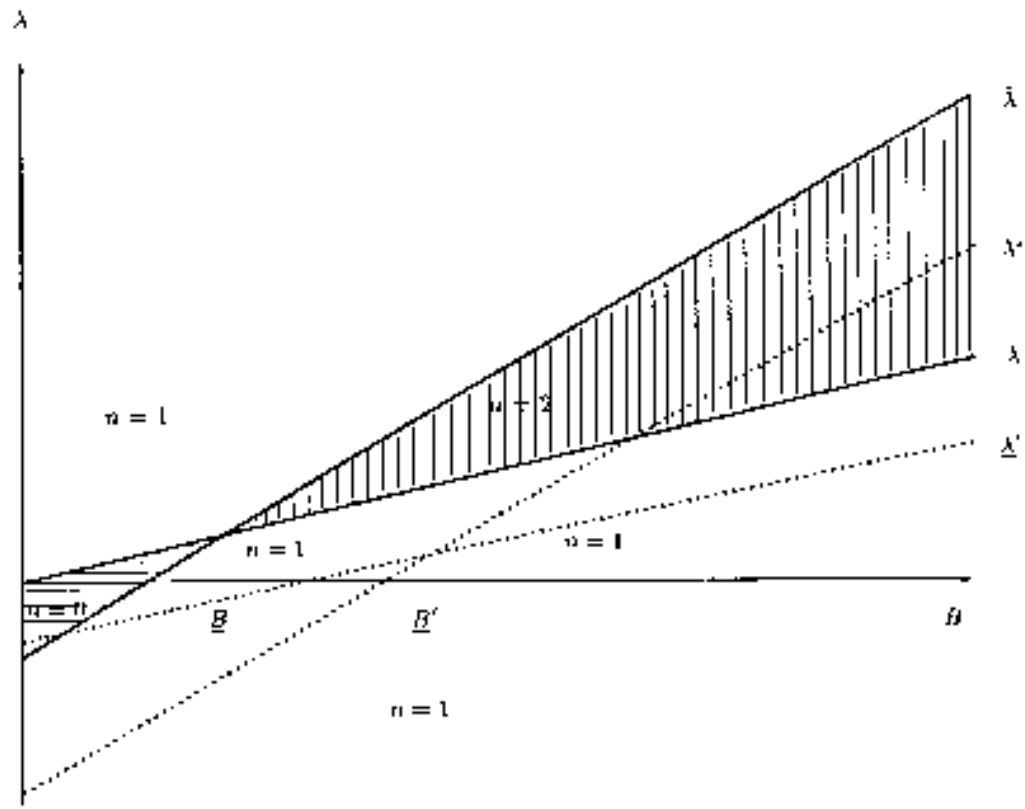


Figure 5: The Number of Steady-States
 (the dotted lines correspond to $1/\eta' > 1/\eta$)